

The Biotech Growth Trust

Industry fundamentals remain positive

The Biotech Growth Trust (BIOG) is a specialist vehicle, aiming to generate long-term capital growth via investment in global biotech stocks.

Following a particularly volatile period for the biotech industry, where concerns about drug pricing and investor risk aversion have weighed heavily on stock prices, the managers are hopeful that greater clarity regarding US healthcare policy will lead to continued improved performance of biotech stocks. Industry fundamentals remain attractive, including continued innovation and valuations are very supportive, which offers the potential for higher industry merger and acquisition activity.

12 months ending	Share price (%)	NAV (%)	NASDAQ Biotech (%)	World-DS Pharm & Bio (%)	FTSE World (%)
31/01/13	47.0	35.2	25.8	25.0	15.3
31/01/14	58.2	65.0	63.4	24.5	10.5
31/01/15	52.5	44.9	43.7	30.8	17.3
31/01/16	(22.1)	(13.7)	(11.7)	0.5	(0.1)
31/01/17	15.5	15.1	17.8	12.3	33.6

Source: Thomson Datastream. Note: All % on a total return basis in GBP.

Investment strategy: Rigorous bottom-up research

BIOG's managers, Richard Klemm and Geoff Hsu, are able to draw on the deep research experience at OrbiMed Capital to construct a concentrated portfolio of global biotech stocks. Potential investee companies are subject to rigorous fundamental research, including an in-depth analysis of research pipelines; stocks are selected ahead of anticipated positive data, as potential acquisition targets or if they are approaching profitability. BIOG invests across the market cap-spectrum, although around two-thirds of the portfolio is held in major biotech companies. At the time of acquisition, no single position may exceed 15% and gearing of up to 20% of NAV is permitted.

Market outlook: Pullback leads to attractive valuation

The last 18 months have seen significant volatility in biotech shares and in aggregate the NASDAQ Biotechnology industry (NBI) has suffered a drawdown of c 25% from the high point achieved in July 2015. Concerns have centred on the outlook for US drug pricing and general investor risk aversion, although biotech stocks have risen by c 20% following the US presidential election. Sector valuations are still favourable – US biotech stocks are now trading at a discount to the broader market versus a typical premium and industry fundamentals remain attractive. As a result, investors may wish to consider a fund investing in an industry that has a history of innovation and potential above-average earnings growth.

Valuation: Modestly wider than historical averages

BIOG's current 7.0% discount to cum-income NAV is modestly wider than the historical averages of the last one, three, five and 10 years (range of 4.1% to 6.2%). The board has an active discount control mechanism in place, aiming to keep the discount below 6%. In keeping with the aim of generating long-term capital growth rather than income, BIOG does not pay a dividend.

Investment trusts

21 February 2017

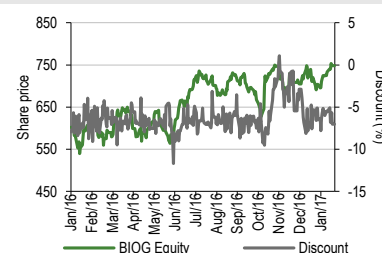
Price	748.0p
Market cap	£418m
AUM	£496m

NAV*	802.9p
Discount to NAV	6.8%
NAV**	804.4p
Discount to NAV	7.0%

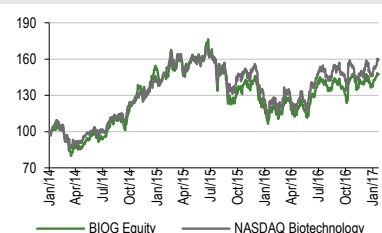
*Excluding income. **Including income. As at 17 February 2017.

Yield	0.0%
Ordinary shares in issue	55.8m
Code	BIOG
Primary exchange	LSE
AIC sector	SS: Biotechnology & Healthcare
Benchmark	NASDAQ Biotechnology Index

Share price/discount performance



Three-year performance vs index



52-week high/low	753.0p	559.5p
NAV** high/low	806.2p	594.2p

**Including income.

Gearing

Gross*	3.5%
Net*	3.5%

*As at 31 January 2017.

Analyst

Mel Jenner +44 (0)20 3077 5720

investmenttrusts@edisongroup.com

[Edison profile page](#)

The Biotech Growth Trust is a research client of Edison Investment Research Limited

Exhibit 1: Trust at a glance
Investment objective and fund background

The Biotech Growth Trust seeks capital appreciation through investing in the worldwide biotechnology industry. Performance is measured against its benchmark index, the NASDAQ Biotechnology Index (sterling adjusted).

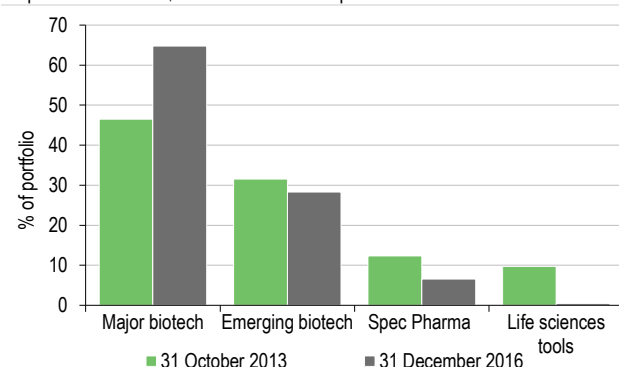
Recent developments

- 7 November 2016: interim results for six months ending 30 September 2016. NAV TR +20.5% versus benchmark +23.2%. Share price TR +21.7%.
- 13 June 2016: announcement of the appointment of Julia le Blan as independent non-executive director at July 2016 AGM.
- 25 May 2016: annual results for 12 months ending 31 March 2016. NAV TR -24.8% versus benchmark -21.8%. Share price TR -26.3%.

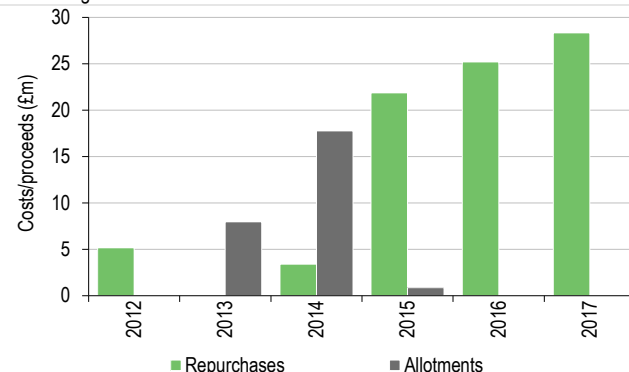
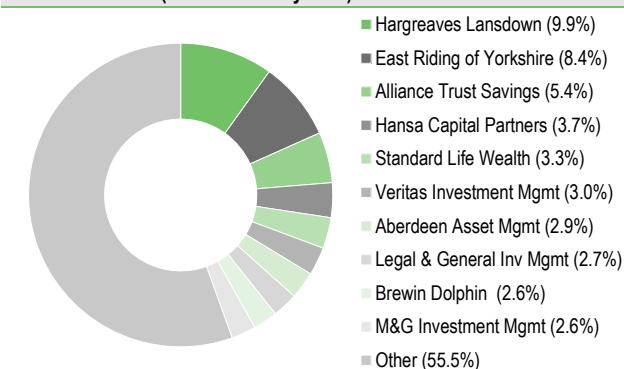
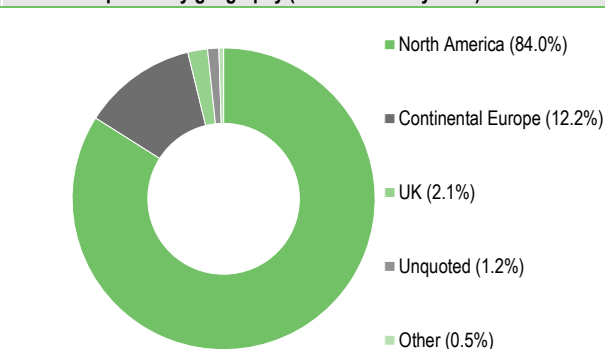
Forthcoming		Capital structure		Fund details	
AGM	July 2017	Ongoing charges	1.0%	Group	Frostrow Capital LLP
Final results	May 2017	Net gearing	3.5%	Manager	OrbiMed
Year end	31 March	Annual mgmt fee	See page 7	Address	25 Southampton Buildings, London, WC2A 1AL, UK
Dividend paid	N/A	Performance fee	See page 7	Phone	+44 (0)20 3008 4910
Launch date	June 1997	Trust life	Indefinite	Website	www.biotechgt.com
Continuation vote	Every five years – next 2020	Loan facilities	See page 7		

Sector exposures: change since 2013

Following an adjustment to the investment objective in October 2013, BIOG is no longer required to invest the majority of assets in companies with a market capitalisation below \$3bn at the time of acquisition.


Share buyback policy and history (financial years)

Renewed annually, the trust has authority to purchase up to 14.99% and allot up to 10% of issued share capital. There is a discount control mechanism in place with a target level of no more than a 6% discount to NAV.


Shareholder base (as at 31 January 2017)

Portfolio exposure by geography (as at 31 January 2017)

Top 10 holdings (as at 31 January 2017)

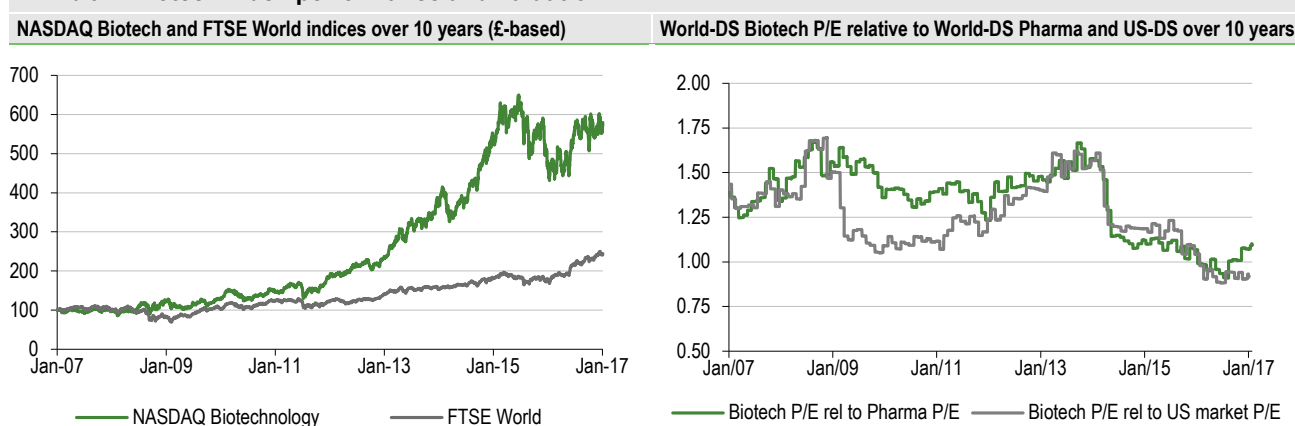
Company	Country	Sector	Portfolio weight %	
			31 January 2017	31 January 2016*
Celgene	US	Major biotech	13.0	8.7
Biogen	US	Major biotech	11.1	11.8
Incyte	US	Emerging biotech	9.8	6.5
Alexion Pharmaceuticals	US	Major biotech	9.5	7.4
Vertex Pharmaceuticals	US	Emerging biotech	7.6	N/A
Shire	UK	Major biotech	7.0	N/A
Illumina	US	Major biotech	4.1	3.6
Gilead Sciences	US	Major biotech	3.5	7.2
Amgen	US	Major biotech	3.1	9.7
BioMarin Pharmaceuticals	US	Emerging biotech	2.7	N/A
Top 10			71.4	71.1

Source: The Biotech Growth Trust, Edison Investment Research, Morningstar, Frostrow Capital. Note: *N/A where not in January 2016 top 10.

Market outlook: Attractive sector valuation

Against a backdrop of long-term outperformance versus world equities (Exhibit 2, left-hand side), the last 18 months has been a volatile period for biotech investors. Following on from allegations of industry price gouging in H215, in early 2016 there was a period of heightened investor risk aversion; the NBI fell by 21.0% in dollar terms during January. In the run-up to the US presidential election there was repeated commentary from both leading candidates about perceived high pricing of pharmaceuticals; the NBI took another leg down ahead of the election result, falling by 11.4% in dollar terms during October 2016, although it has rallied meaningfully following the election of Trump. The relative valuation of biotech stocks remains attractive (Exhibit 2, right-hand side); compared to US equities, global biotech stocks are very close to the lowest relative valuation of the last 10 years.

Exhibit 2: Biotech index performance and valuation



Source: Thomson Datastream, Edison Investment Research. Note: Using Datastream pharmaceutical, biotech and US indices.

While relative valuations versus world pharma stocks have risen from the low point in mid-2016, as shown in Exhibit 3, the largest US biotech stocks are more attractively valued than the largest US pharma stocks. For 2017e, the median top-five biotech company has a forward P/E multiple of 13.6x versus 16.4x for the median top-five pharma company. In addition, some of the larger US biotech stocks such as Celgene and Regeneron have meaningful estimated earnings growth over the next five years, much higher than any of the top-five pharma companies.

Exhibit 3: Consensus estimates EPS growth rates and valuations of US large-cap biotech & pharma companies

Top biotech	5y CAGR	2017e P/E	2018e P/E	PEG	Top pharma	5y CAGR	2017e P/E	2018e P/E	PEG
Amgen	6.4%	13.6x	13.1x	2.1x	Johnson & Johnson	5.5%	16.4x	15.7x	3.0x
Celgene	19.8%	16.4x	13.7x	0.8x	Pfizer	5.8%	12.8x	11.7x	2.2x
Gilead Sciences	-6.0%	7.7x	8.3x	-1.3x	Merck	6.8%	16.9x	15.5x	2.5x
Biogen	7.1%	13.3x	12.4x	1.9x	AbbVie	9.3%	11.0x	9.4x	1.2x
Regeneron Pharmaceuticals	17.4%	28.8x	24.0x	1.7x	Bristol-Myers Squibb	9.1%	18.6x	16.7x	2.0x
Median	7.1%	13.6x	13.1x	1.7x	Median	6.8%	16.4x	15.5x	2.2x

Source: Edison Investment Research, Bloomberg. Note: Data at 13 February 2017.

While there is an overhang to the biotech industry until investors have more clarity on President Trump's healthcare policies – he has talked about lower drug pricing, but has also discussed the possibility of less regulation, faster FDA approval of drugs, lower corporate tax rates and repatriation of overseas capital – biotech industry fundamentals remain positive. New therapeutic classes are being developed, which could generate multiple billions of dollars in drug revenues in the years ahead, in areas such as oncology and infectious diseases. There is a growing demand for healthcare, both in the developed world as a result of aging populations, and from emerging economies due to a rising middle class. In addition, the US regulatory environment remains

favourable for the healthcare industry. For investors wanting exposure to the biotech sector, a specialist fund with a good long-term record of outperformance versus its benchmark, may appeal.

Fund profile: Specialist investment in biotech sector

BIOG was launched in June 1997, is listed on the Main Market of the London Stock Exchange and since May 2005 has been managed by OrbiMed Capital. OrbiMed is the largest global healthcare-specialist investment manager with c \$14bn assets under management and a track record of more than 20 years investing in both public and private equity; it employs more than 100 investment professionals, many of whom have medical and scientific backgrounds. BIOG is managed by Richard Klemm and Geoff Hsu, who are based in New York; they aim to generate capital growth from a concentrated global portfolio of biotech and related shares (33 holdings at the end of January 2017). UK-based Frostrow Capital is the alternative investment fund manager providing company secretarial, administration and marketing services.

BIOG is benchmarked against the NBI, although the managers select stocks on a bottom-up basis, without reference to benchmark weightings. There are broad investment guidelines in place – at the time of acquisition, a maximum of 15% of NAV may be invested in any individual stock, 10% in unquoted investments and \$15m in private equity funds managed by OrbiMed; gearing of up to 20% of NAV is permitted.

The fund managers: Geoff Hsu and Richard Klemm

The manager's view: Retaining positive industry outlook

We spoke to Hsu who explains that following the US election, a Trump rather than Clinton victory coupled with a Republican Congress was viewed as a more favourable outcome for the biotech industry and the NBI rallied by c 20%. However, Trump has since talked about US drug pricing being too high. On 31 January 2017, he met with the CEOs of some of the largest pharma and biotech companies and suggested “the pricing has been astronomical”. He stated that Medicare needs to negotiate heavily on drug pricing and he is in favour of increased competition as a means of lowering prices. However, it is not all bad news for the pharma and biotech industries. Trump is pro-innovation – he wants more generic and innovative drug approvals, which could lead to shorter timelines and lowering the bar for drug approvals at the FDA. Hsu comments that the reason that Mylan, Turing Pharmaceuticals and Valeant Pharmaceuticals were able to raise prices aggressively on old drugs was due to a lack of competing products.

President Trump has also talked about the potential for lower corporate taxes and the ability for companies with overseas assets to repatriate their offshore capital at reduced tax rates. He is keen for US companies to invest domestically, thus creating more jobs – this is consistent with his ‘America First’ philosophy. The manager suggests that until there is more clarity on drug pricing, the NBI is unlikely to have a sustained rally; however, he remains hopeful that policy will become clearer during 2017 and share prices will once again be driven by positive industry fundamentals.

In the meantime, the biotech industry is supported by attractive valuations following a significant industry drawdown since mid-2015; the NBI is trading at a discount to the S&P 500 Index, rather than at a historical premium. Hsu suggests that this could be a catalyst for more industry mergers and acquisitions, which could be a catalyst for biotech stocks to revalue in aggregate. If international companies are able to repatriate their overseas cash at reasonable tax rates, this would provide even more capital that could be used for acquisitions. Some of the recently announced industry bids have been at significant premiums, due to corporate acquirers valuing assets at much higher prices than in the public markets. Examples of recently closed deals were Pfizer’s acquisition of Medivation, which was at a 210% premium to Medivation’s 2016 low stock

price and Sunovion Pharmaceuticals, which announced a bid for Cynapsus Therapeutics at a 280% premium off its 2016 low.

The manager suggests that innovation remains very strong within the biotech industry; for example, he expects the first gene therapy to be approved in 2017 and the regulatory environment remains supportive. Considering news flow within the biotech industry over the last few months, Hsu suggests that as ever, there will be successes and failures in drug trials. Good news included Tesaro's announcement of positive trial results for its PARP inhibitor niraparib for ovarian cancer, and Biogen Idec's Phase III trial for nusinersen for children with spinal muscular atrophy was stopped early due to overwhelming efficacy. Negative news included Alexion Pharmaceuticals' announcement of top-line results from its Phase III REGAIN study of Soliris in patients with refractory generalised myasthenia gravis; it barely missed its statistical significant end point and Eli Lilly's Phase III trial of Alzheimer's drug solanezumab was high profile and also barely missed its end point. The manager suggests that the news from Eli Lilly was frustrating, as early indications for the drug were positive and Alzheimer's is a huge, untapped market.

Asset allocation

Investment process: Rigorous proprietary research

The managers are able to draw on the significant resources at OrbiMed, which has more than 100 investment professionals, many of whom have PhDs or are former founders or CEOs of healthcare companies. Stocks are selected on a bottom-up basis following rigorous fundamental research, which involves financial modelling, an assessment of research pipelines and identification of likely catalysts. Meeting with company management forms a key part of the investment process, to understand the commercial prospects and development programs for individual drugs. Stocks are purchased ahead of anticipated positive data, if they are viewed as a potential takeover candidate or for early-stage companies, if they are approaching profitability. Portfolio exposure is broad, across the market-cap spectrum. Holdings are constantly reassessed to ensure the investment rationale still holds true; turnover tends to be higher for smaller-cap companies within the portfolio.

Current portfolio positioning

At end-January 2017, BIOG's top 10 positions were 71.4% of the portfolio, this was broadly in line with 71.1% at end-January 2016 – seven holdings were common to both periods. The majority of assets held are US equities (c 85% at end-January 2017), reflecting the country's dominance in the global biotech industry; the portfolio is broadly split between major biotech (c 65%), emerging biotech (c 28%) and specialty pharma (c 7%). Over time, the allocation to specialty pharma has declined, as the manager suggests these companies are more vulnerable to pricing pressure.

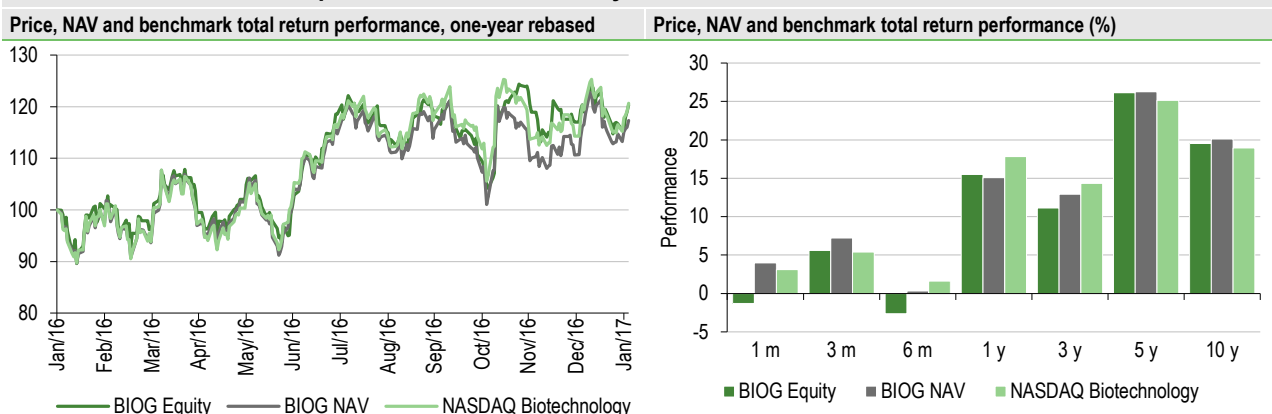
Formerly the largest holding in the BIOG portfolio, now the ninth-largest position, Amgen is the largest global biotech company (market cap c \$130bn). It recently had positive trial data for a long-awaited study in cholesterol drug Repatha, which successfully reduced heart attacks and other cardiovascular events. Repatha met both its primary and secondary endpoints and no new safety issues were observed; sell-side analysts have suggested that Repatha's revenues could exceed \$1bn in 2018. Amgen also released positive Q416 results, beating both top- and bottom-line consensus expectations, while raising guidance for both 2017 estimated sales and earnings.

Within the emerging biotech exposure, BIOG's largest position is Incyte Corp; its IDO (immune checkpoint) inhibitor could be a key part of combination therapies in multiple cancers. Other holdings include Vertex Pharmaceuticals, which the manager suggests could have exciting news in H217 regarding Orkambi, its cystic fibrosis drug, and Array BioPharma, which has binimetinib in Phase III trials for melanoma and colorectal cancer.

Performance: Outperformance over the long term

For H117 (to 30 September 2016) BIOG's NAV and share price total return of 20.5% and 21.7% respectively trailed the 23.2% benchmark total return. The largest contributor was Biogen Idec, which had positive nusinersen Phase III data in spinal muscular atrophy and there was speculation that the company may be acquired. The largest detractor was Ono Pharmaceutical, which BIOG has since sold. Ono was affected by negative data from partner Bristol-Myers Squibb's Opdivo in a Phase III trial for untreated lung cancer and by concerns of lower Opdivo pricing in Japan.

Exhibit 4: Investment trust performance to 31 January 2017



Source: Thomson Datastream, Edison Investment Research. Note: Three-, five- and 10-year performance figures annualised.

Exhibit 4 shows BIOG's absolute returns; over one year they have been enhanced by sterling weakness. Relative returns in Exhibit 5 show that BIOG has outperformed the benchmark in both share price and NAV total return terms over five and 10 years, while trailing over one and three years. As a reference, BIOG has significantly outperformed world pharma and biotech stocks (represented by the Datastream pharmaceutical & biotechnology index) and the FTSE World index over five and 10 years and FTSE All-Share index over three, five and 10 years.

Exhibit 5: Share price and NAV total return performance, relative to indices (%)

	One month	Three months	Six months	One year	Three years	Five years	10 years
Price relative to NASDAQ Biotechnology	(4.3)	0.2	(4.2)	(2.0)	(8.2)	3.9	5.1
NAV relative to NASDAQ Biotechnology	0.9	1.8	(1.3)	(2.3)	(3.7)	4.6	10.3
Price relative to World-DS Pharm & Bio	(1.0)	6.2	2.0	2.8	(7.1)	38.8	77.7
NAV relative to World-DS Pharm & Bio	4.3	7.9	5.0	2.4	(2.5)	39.7	86.6
Price relative to FTSE World	(2.1)	2.5	(12.3)	(13.6)	(12.4)	60.0	146.5
NAV relative to FTSE World	3.1	4.1	(9.7)	(13.9)	(8.1)	61.0	158.8
Price relative to FTSE All-Share	(1.0)	2.5	(9.2)	(3.8)	11.9	103.2	246.4
NAV relative to FTSE All-Share	4.3	4.2	(6.5)	(4.2)	17.4	104.5	263.6

Source: Thomson Datastream, Edison Investment Research. Note: Data to end-January 2017. Geometric calculation.

Exhibit 6: NAV total return performance relative to benchmark over five years

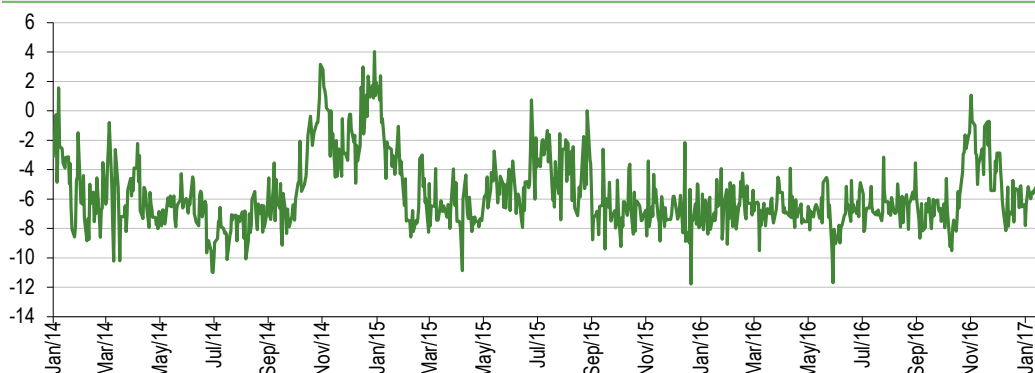


Source: Thomson Datastream, Edison Investment Research

Discount: Wider than average of last 12 months

BIOG's current 7.0% discount to cum-income NAV is modestly wider than the 6.2% average of the last 12 months (range of 1.1% premium to 11.7% discount). It is also wider than the averages of the last three, five and 10 years of 5.7%, 4.1% and 5.3% respectively. The board employs a discount control mechanism, aiming to limit the discount at 6% – so far in FY17, 4.5m shares have been repurchased at a cost of £28.3m.

Exhibit 7: Share price premium/discount to NAV over three years (%)



Source: Thomson Datastream, Edison Investment Research. Note: NAV with debt at fair value.

Capital structure and fees

BIOG is a conventional investment trust, with one class of share; there are currently 55.8m shares in issue. Gearing of up to 20% of net assets is permitted, which was increased from 10% to 15% in 2014 and from 15% to 20% in 2015 – BIOG has an overdraft facility with JPMorgan Chase.

Portfolio manager OrbiMed receives an annual fee of 0.65% of net assets, while Frostrow Capital is paid 0.3% of the market cap plus £60,000. In FY16, ongoing charges were 1.0%, which was a 20bp reduction versus the prior year. A performance fee is payable – 16.5% of outperformance versus the benchmark is split between OrbiMed (15%) and Frostrow (1.5%). It is calculated quarterly, but only paid if outperformance is maintained; no performance fee was paid in H117 or FY16.

Dividend policy and record

BIOG aims for capital growth; as biotech companies are generally early-stage firms, very few pay a dividend. The last dividend that BIOG declared was 0.2p per share in 2001. For H117, net revenue return was £0.59m, which was a 72% increase versus H116 (£0.34m) (1.0p per share versus 0.5p).

Peer group comparison

BIOG is a member of the AIC Sector Specialist: Biotechnology & Healthcare sector, which comprises two biotech-focused investment trusts (Biotech Growth Trust and International Biotechnology Trust) and three generalist healthcare funds (Polar Capital Global Healthcare Growth and Income Trust, Worldwide Healthcare Trust and recently listed BB Healthcare Trust). To enable a broader comparison, we have included two Swiss-quoted funds: BB Biotech and HBM Healthcare Investments – their dividends are paid out of capital, rather than portfolio income. BIOG's NAV total return ranks first out of four funds over 10 years and second out of six funds over five years. Over

one and three years, BIOG's relative performance has been more challenging, largely as a result of stock-specific issues; it ranks fourth and fifth out of six funds over one and three years respectively. Its risk-adjusted returns, as measured by the Sharpe ratio, are below the peer group-weighted average over one and three years. BIOG's discount is broadly in line with the peer average, its ongoing charge is lower and in line with most of the trusts highlighted, a performance fee is payable. BIOG currently has the second highest gearing in the peer group and reflecting its focus on capital growth, it does not pay a dividend.

Exhibit 8: Biotech and healthcare investment companies, as at 13 February 2017

% unless stated	Market cap £m	NAV TR 1 Year	NAV TR 3 Year	NAV TR 5 Year	NAV TR 10 Year	Sharpe 1y (NAV)	Sharpe 3y (NAV)	Discount (ex-par)	Ongoing charge	Perf. fee	Net gearing	Dividend yield (%)
Biotech Growth Trust	413.8	30.1	44.9	217.6	534.9	0.5	0.2	(4.9)	1.0	Yes	103	0.0
BB Biotech	3,421.7	49.1	73.8	311.6	525.2	1.0	0.5	(1.5)	1.1	No	101	4.8
HBM Healthcare Investments	825.4	5.6	66.2	210.4		(0.4)	0.5	(20.8)	1.7	Yes	100	5.1
International Biotechnology	221.2	43.4	77.3	208.9	313.3	0.9	0.5	(9.4)	1.4	Yes	100	3.9
Polar Capital Global Healthcare	234.0	26.7	41.7	107.1		0.6	0.1	(5.0)	1.0	Yes	100	2.1
Worldwide Healthcare	1,055.2	37.2	72.9	196.2	384.6	1.1	0.6	(1.2)	0.9	Yes	108	0.7
Weighted average		38.9	69.6	260.6	487.8	0.8	0.5	(4.7)	1.2		102	3.9
BIOG rank in sector	4	4	5	2	1	5	5	3	4		2	6

Source: Morningstar, Edison Investment Research. Note: TR=total return. Sharpe ratio is a measure of risk-adjusted return. The ratios shown are calculated by Morningstar for the past 12- and 36-month periods by dividing a fund's annualised excess returns over the risk-free rate by its annualised standard deviation. Net gearing is total assets less cash and equivalents as a percentage of net assets.

The board

There are seven directors on the BIOG board, of whom six are independent. Chairman, Andrew Joy was appointed in March 2012 and assumed his current role in July 2016, following the retirement of the Rt Hon Lord Waldegrave of North Hill. The other independent directors and their dates of appointment are: Peter Keen (June 1997); Professor Dame Kay Davies (March 2012); Stephen Bates (July 2015); the Rt Hon Lord Willetts (November 2015); and Julia Le Blan (July 2016). Sven Borho was appointed in March 2006; as a founding member of BIOG's portfolio manager OrbiMed, he is considered to be non-independent. The directors have backgrounds in accountancy, investment management, life sciences and politics.

Edison is an investment research and advisory company, with offices in North America, Europe, the Middle East and AsiaPac. The heart of Edison is our world-renowned equity research platform and deep multi-sector expertise. At Edison Investment Research, our research is widely read by international investors, advisers and stakeholders. Edison Advisors leverages our core research platform to provide differentiated services including investor relations and strategic consulting. Edison is authorised and regulated by the Financial Conduct Authority (www.fsa.gov.uk/register/firmBasicDetails.do?sid=181584). Edison Investment Research (NZ) Limited (Edison NZ) is the New Zealand subsidiary of Edison. Edison NZ is registered on the New Zealand Financial Service Providers Register (FSP number 247505) and is registered to provide wholesale and/or generic financial adviser services only. Edison Investment Research Inc (Edison US) is the US subsidiary of Edison and is regulated by the Securities and Exchange Commission. Edison Investment Research Limited (Edison Aus) [46085869] is the Australian subsidiary of Edison and is not regulated by the Australian Securities and Investment Commission. Edison Germany is a branch entity of Edison Investment Research Limited [4794244]. www.edisongroup.com

DISCLAIMER

Copyright 2017 Edison Investment Research Limited. All rights reserved. This report has been commissioned by The Biotech Growth Trust and prepared and issued by Edison for publication globally. All information used in the publication of this report has been compiled from publicly available sources that are believed to be reliable; however we do not guarantee the accuracy or completeness of this report. Opinions contained in this report represent those of the research department of Edison at the time of publication. The securities described in the Investment Research may not be eligible for sale in all jurisdictions or to certain categories of investors. This research is issued in Australia by Edison Aus and any access to it, is intended only for "wholesale clients" within the meaning of the Australian Corporations Act. The Investment Research is distributed in the United States by Edison US to major US institutional investors only. Edison US is registered as an investment adviser with the Securities and Exchange Commission. Edison US relies upon the "publishers' exclusion" from the definition of investment adviser under Section 202(a)(11) of the Investment Advisers Act of 1940 and corresponding state securities laws. As such, Edison does not offer or provide personalised advice. We publish information about companies in which we believe our readers may be interested and this information reflects our sincere opinions. The information that we provide or that is derived from our website is not intended to be, and should not be construed in any manner whatsoever as, personalised advice. Also, our website and the information provided by us should not be construed by any subscriber or prospective subscriber as Edison's solicitation to effect, or attempt to effect, any transaction in a security. The research in this document is intended for New Zealand resident professional financial advisers or brokers (for use in their roles as financial advisers or brokers) and habitual investors who are "wholesale clients" for the purpose of the Financial Advisers Act 2008 (FAA) (as described in sections 5(c) (1)(a), (b) and (c) of the FAA). This is not a solicitation or inducement to buy, sell, subscribe, or underwrite any securities mentioned or in the topic of this document. This document is provided for information purposes only and should not be construed as an offer or solicitation for investment in any securities mentioned or in the topic of this document. A marketing communication under FCA rules, this document has not been prepared in accordance with the legal requirements designed to promote the independence of investment research and is not subject to any prohibition on dealing ahead of the dissemination of investment research. Edison has a restrictive policy relating to personal dealing. Edison Group does not conduct any investment business and, accordingly, does not itself hold any positions in the securities mentioned in this report. However, the respective directors, officers, employees and contractors of Edison may have a position in any or related securities mentioned in this report. Edison or its affiliates may perform services or solicit business from any of the companies mentioned in this report. The value of securities mentioned in this report can fall as well as rise and are subject to large and sudden swings. In addition it may be difficult or not possible to buy, sell or obtain accurate information about the value of securities mentioned in this report. Past performance is not necessarily a guide to future performance. Forward-looking information or statements in this report contain information that is based on assumptions, forecasts of future results, estimates of amounts not yet determinable, and therefore involve known and unknown risks, uncertainties and other factors which may cause the actual results, performance or achievements of their subject matter to be materially different from current expectations. For the purpose of the FAA, the content of this report is of a general nature, is intended as a source of general information only and is not intended to constitute a recommendation or opinion in relation to acquiring or disposing (including refraining from acquiring or disposing) of securities. The distribution of this document is not a "personalised service" and, to the extent that it contains any financial advice, is intended only as a "class service" provided by Edison within the meaning of the FAA (ie without taking into account the particular financial situation or goals of any person). As such, it should not be relied upon in making an investment decision. To the maximum extent permitted by law, Edison, its affiliates and contractors, and their respective directors, officers and employees will not be liable for any loss or damage arising as a result of reliance being placed on any of the information contained in this report and do not guarantee the returns on investments in the products discussed in this publication. FTSE International Limited ("FTSE") © FTSE 2017. "FTSE®" is a trade mark of the London Stock Exchange Group companies and is used by FTSE International Limited under license. All rights in the FTSE indices and/or FTSE ratings vest in FTSE and/or its licensors. Neither FTSE nor its licensors accept any liability for any errors or omissions in the FTSE indices and/or FTSE ratings or underlying data. No further distribution of FTSE data is permitted without FTSE's express written consent.